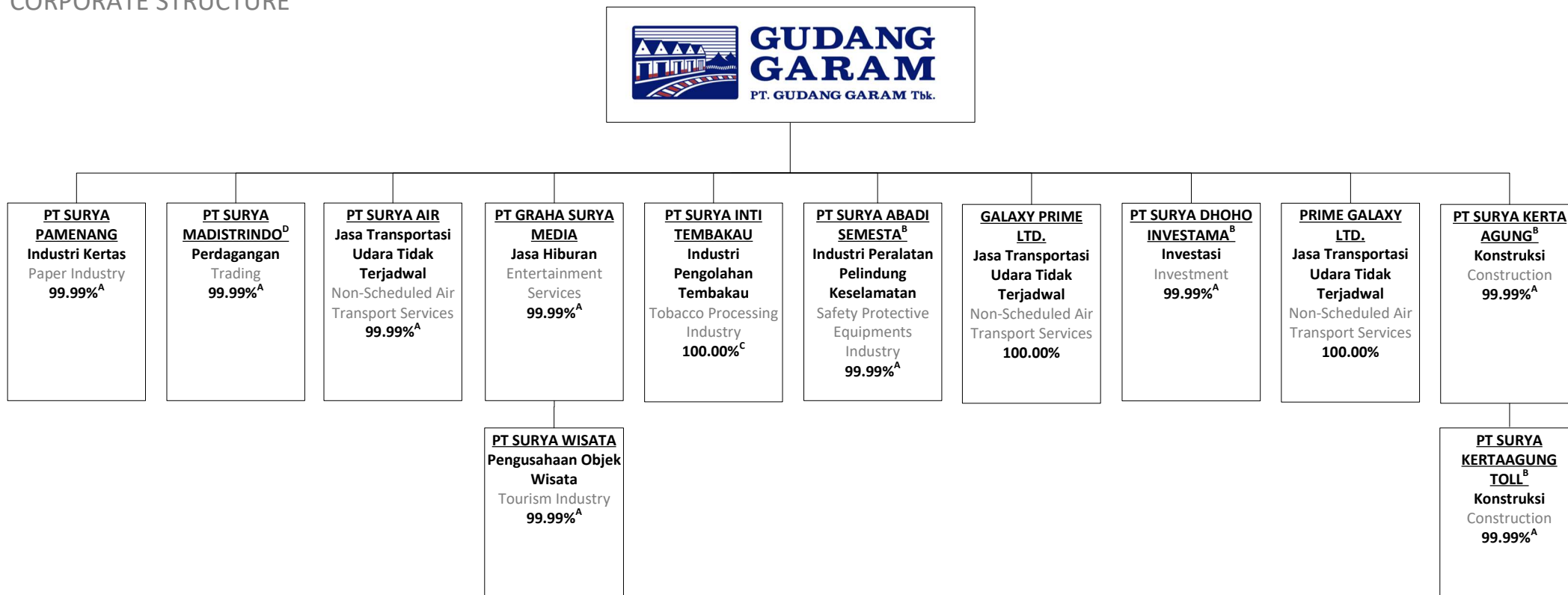


STRUKTUR PERUSAHAAN
CORPORATE STRUCTURE



^A 100% kurang 1 (satu) saham.
100% less 1 (one) share.

^B Belum beroperasi komersial.
Have not commenced its commercial operations.

^C 1 (satu) saham dimiliki melalui PT Surya Madistrindo.
1 (one) share is owned through PT Surya Madistrindo.

^D Merupakan perusahaan perdagangan/distributor tunggal Gudang Garam yang terdiri dari 19 entitas.
A trading company/sole distributor of Gudang Garam which is made up of 19 entities.